

Thank you for purchasing an Outdoor Revolution product, this product will give years of satisfactory service if basic instructions are followed, our products are designed for durability and for ease of erection.



## AIREDALE 8.0

### INSTRUCTIONS & CARE MANUAL

[WWW.OUTDOOR-REVOLUTION.COM](http://WWW.OUTDOOR-REVOLUTION.COM)

UNIT 1 BRICK PARK  
BRETFIELD COURT  
BRETTON STREET INDUSTRIAL ESTATE  
DEWSBURY  
WEST YORKSHIRE  
WF12 9BY



## IMPORTANT: PLEASE CHECK YOUR EQUIPMENT

1 X FLYSHEET (OR OUTER)  
4 X OXYGEN AIRFRAME TUBES  
1 X CANOPY POLE  
2 X INNER TENTS  
1 X DUAL ACTION HAND PUMP  
1 X BAG OF PEGS  
1 X REPAIR KIT  
1 X HOLDALL



We highly recommend that you insure your tent against storm damage or accidental damage, as the warranty does not cover such eventualities. The manufacturer IS NOT liable for any damage caused to the tent or its contents because of misuse, incorrect pitching or extreme weather.  
(Full warranty details are at the back of this booklet)

## THE WARRANTY (CONTINUED...)

- Flaws in the fabric caused by excessive use
- Imperfections and pulls in mesh doors due to wear and tear
- Water ingress through fabric as a result of UV degradation
- Water ingress through seams caused by excessive abrasion of seams or taped seam
- Broken zips caused by over tensioning, forcing or snagging
- Over tensioned/stretched seams coming apart
- Buckles subjected to undue force or abrasion
- Lost/popped out eyelets
- Broken holdalls
- Pole breakages or tube punctures (where applicable)
- Collateral damage from a pole breakage
- UV degradation
- Condensation, (a natural occurrence, exacerbated by insufficient ventilation opening)
- Consequential damage/loss to property/belongings (either inside or outside of the product) or shortening of holidays

Outdoor Revolution work very closely with our retail partners to manage all warranty repairs/issues:

**\*\*Please contact your retailer immediately (even if purchased online) if you feel your Outdoor Revolution product has a genuine warranty issue. The retailer, in turn will raise the issue with ourselves and we will action; with the retailer, according to the nature of the claim.**

**\*\*Please ensure the product is clean and dry and as close to its original condition as possible before sending back for checking.**

**\*\*Wet or dirty products will not be accepted back for checking/warranty claims.**

**\*\* It is important to note that the Sales Contract between yourself and the retailer you purchased the Outdoor Revolution product from, remains valid throughout any warranty claim and your statutory rights are not affected.**

## OUTDOOR REVOLUTION GUARANTEE

Outdoor Revolution products are designed and produced to the highest manufacturing standards. The best quality fabrics and components available are used for each specific item and a rigorous checking process of finished products is in place.

All finished products are:-

- Checked for and are free of minor defects
- Are fit for the purpose/use that they are intended
- Are of a satisfactory quality

It is important that correct care is taken when opening the product, erecting, using and just as importantly, packing away the product. Following these rules will keep your product in reliable working condition for many years. Failure to adhere to these simple guidelines may cause unnecessary damage to the product (see formal instructions for hints and tips on handling/erecting the product). A repair kit is included in the product to help resolve any minor issues.

## THE WARRANTY

The Outdoor Revolution Warranty lasts for 12 months from the original date of purchase (please keep all receipts or copies of any relevant transaction to substantiate the purchase date). The warranty only covers workmanship and fabric/components. Any faults found within 6 months of purchase will be investigated by Outdoor Revolution. Faults found outside of the initial six months of purchase will need to be proven by you the purchaser, in line with current consumer legislation after the short term right to reject has ended.

Retailer will not refund a purchase if no fault is found.

Product warranty must be registered **BEFORE** use via [www.outdoor-revolution.com](http://www.outdoor-revolution.com) and as soon as possible from the date of purchase.

The manufacturer's warranty does not cover the following:-

- General wear and tear over extended periods of use or seasonal pitching of the product
- Accidental damage caused by but not exclusive to, humans, animals or weather

## IMPORTANT INFORMATION

- ◆ Please do not leave for your holiday without fully erecting and checking you have all the contents for your tent. If you are missing anything please contact your retailer immediately before use.
- ◆ Please also note that manmade fabrics are prone to condensation when the warm air and moisture inside the tent comes into contact with the colder outside of the tent fabric. You may also experience condensation in the tube sleeves. This is a perfectly natural occurrence and should not be confused with leaking. Ensure all Vortex Vents are open whenever possible to help combat condensation.
- ◆ Ideally erect your tent for some period before use - allowing it to weather. 'Weathering' can take a few uses of the tent before it is fully effective. Seam sealant can be used to solve any persistent weeps. This process is completely normal.
- ◆ Make sure before erecting, that you site the tent on clear level ground with no sharp objects underneath and that all the zips are fully closed. (We recommend laying a groundsheet down to keep the tent dry and clean).
- ◆ We suggest conducting a trial run of your tent to familiarise yourself with the set up and use of the tent. If you have any issues relating to pitching your tent please contact your dealer for help before going on holiday.
- ◆ Please note this tent is designed as a 'touring' tent and not for permanent pitch.
- ◆ After use always dry and air the tent before packing away to prevent mildew or mould.
- ◆ Any dirt or stains can be removed by brushing or gently washing with warm water. DO NOT use detergents as this will destroy the waterproofing on the fabrics.
- ◆ DO NOT cook or smoke in this tent; although the outer fabric is flame retardant treated it will still melt.
- ◆ In the event of damage; please contact your retailer. If for whatever reason you are unable to contact them please email [cs@blue-diamond-products.co.uk](mailto:cs@blue-diamond-products.co.uk) and our customer service team will be happy to assist.

## OPTIONAL ACCESSORIES

- ♦ Stone Protection Footprint - Groundsheet to give additional protection to your tent.
- ♦ Airedale 8 Lounge Liner - Micro Polyester lining which toggles in to the inside of the tent.
- ♦ Airedale 8 UV Pro Cover - Exterior roof cover to protect your tent from tree sap and other such products.
- ♦ Snugrug - Cosy, thermal backed patterned carpet for additional comfort in your tent.
- ♦ Jet Stream Electric Pump - 12 Volt Electric Pump suitable for use on Outdoor Revolution products and other inflatable products.

Look at [www.outdoor-revolution.com](http://www.outdoor-revolution.com) for more information.

## DURA-TECH 3 YEAR WARRANTY

The AirFrame Tubes come with a 3 YEAR WARRANTY\*

You must sign up for the 3 YEAR WARRANTY on the Outdoor Revolution website for it to be valid.

\*Terms and Conditions apply - find the full terms and conditions on our website\*

## TROUBLE SHOOTING

| <u>PROBLEM</u>  | <u>REASON</u>   | <u>SOLUTION</u>  |
|---|---|--|
| The Air tube keeps deflating after removing the pump. | The Dynamic Speed Valve button hasn't been pressed back out.  | Press the quick release button back out to shut the valve.   |
| The tent is leaking.                                  | The tent requires weathering two or three times before it fully seals itself so you may experience a little bit of weeping.<br><br>This could also be condensation, an inevitable occurrence. | Allow the tent to get wet then dry two or three times.<br><br>Open all the vents to increase air flow and reduce condensation. |
| Bowing and twisting of the tubes.                     | The tubes can twist inside the sleeves, particularly when packing away so next time the tube bows.  | Unzip the sleeve whilst the tube is deflated and re-position the tube.   |

## IN THE EVENT OF A PUNCTURE

If you have a small puncture in your Air Frame Tube you can easily repair it using the standard puncture repair kit.

- ♦ To remove the Air Frame Tube - deflate the tube and then unzip the two protective sleeves over the tube and pull the Air Tube out. Do not unzip the sleeves whilst the tube is inflated.
- ♦ Locate and repair the puncture on the Air Frame Bladder.
- ♦ Place the Air Tube back in to the sleeves in the correct place with the valves in the valve hole. Make sure the Tube is straight and not twisted.
- ♦ Zip the two sleeves back up fully.
- ♦ Inflate the AirFrame Tube again, ensuring that the puncture has now been repaired.
- ♦ If this process doesn't work you may have to buy a new bladder.

\*\*Spare AirFrame Bladders can be bought to replace damaged ones. Visit the Spares Section at [www.outdoor-revolution.com](http://www.outdoor-revolution.com) or contact us on 01924 455313\*\*

\*\*Awnings will not be replaced because of damaged bladders\*\*



## PACKING AWAY YOUR TENT

- ◆ Zip up all the windows and doors before deflating.
- ◆ Unpeg the guy lines, storm straps and most of the pegs around the tent leaving the four corners pegged out.
- ◆ Open each of the Dynamic Speed Valves in turn and press in the quick release button. Leave the button pressed in.
- ◆ Unpeg the four corners.



Let the tent collapse on itself and push as much air out of the tube and the tent as possible.

Fold the tent in on itself length ways to make a rectangular shape.



Then fold the tent in on itself to make a long sausage shape. Measure the width of the tent sausage against the bag to make sure it will fit in to the bag. Start rolling the tent and squishing the air out as you roll.

Roll the rolled tent on to the bag and pull the sides up round it. Finally, zip up the bag.



## PLEASE READ THE INSTRUCTIONS CAREFULLY

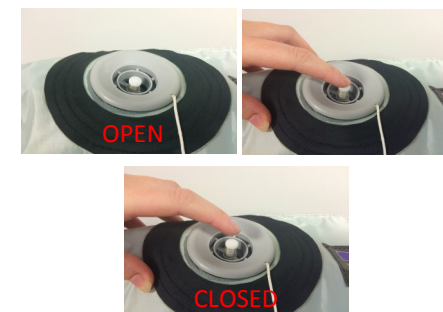
**TIP:** Refer to the photograph to help when pitching your **Airedale 8**

1. Spread the flysheet out on the ground where you want to pitch it.



2. Peg down four corners of the tent using the adjustable pegging points. This keeps the tent in place whilst you inflate it. You may need to re-adjust them afterwards.

3. Locate the Dynamic Speed Valve for the main frame of the tent and ensure the valve is **closed** before attaching the pump. (The valve is closed when the button is pressed out). There is an additional valve at the other end of the tube - make sure this is also closed.



4. Next, attach the pump to the Dynamic Speed Valve and begin to carefully inflate - taking care that no part of the fabric is caught anywhere.

5. Inflate the Airframe until you can give it a good squeeze. The tube needs to have room inside for air to expand. Don't worry if you do keep inflating - the Intelligent Frame will release any excess air. (Please note the Intelligent Frame is set to a limit of 5.5psi before it will release air).



6. Then re place the cap and cover with the Velcro sleeve to keep the outside of the tent looking neat and tidy. Repeat steps 3, 4, 5 and 6 with the remaining tubes on the bedrooms and the canopy.



7. Peg out and tension the front of the tent. Use the adjustable pegging straps to tension the tent as you desire. Make sure you don't over tension the fabric.



8. Locate the front canopy pole, erect the pole and thread it through the sleeve on the tent canopy. Insert the pin in to the bottom and peg out.



9. Peg out all the remaining pegging points and guy lines starting from one corner and work your way around the tent.



9. Inside, if the inner tent isn't already clipped in. Lay the inner tent in the space with the door at the front. Match the coloured elastic to the coloured loop and work your way round clipping the inner tent in.



10. Next, put your sleeping equipment inside the inner tent.

11. Please make sure in heavier weather you use all the guy lines and we suggest using storm straps to hold the tent in place.



**WARNING: Never unzip the zips on the protective sleeves whilst the AirFrame Tubes are inflated. This will result in the tube bursting or ballooning out of the sleeve causing damage to the tube and the sleeve. This is not covered under the warranty.**